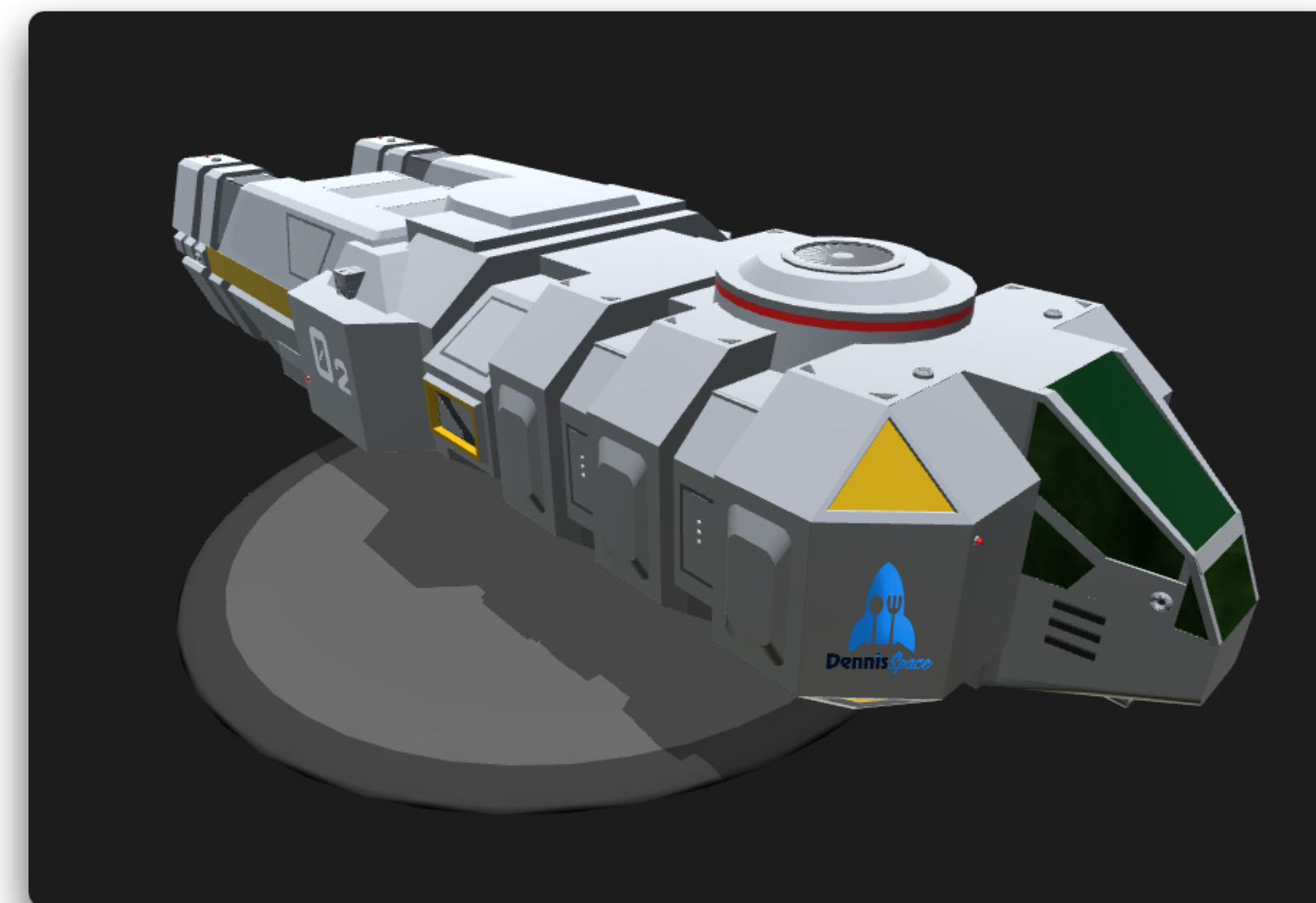


The Lunar Gateway & Project Artemis

The realistic daily operations of space transport, particularly of perishable items vital to quality extra-planetary foodservice can and will be effected by a wide variety of factors. These factors, which will come from both internal and external sources, will change drastically and frequently. Internal challenges include international relations, logistics, budgets and payload requirements. External challenges will include weather; both terrestrial and celestial, navigation, and unforeseen mechanical complications off-planet. We understand this and are building an adaptable model that will change and grow to not only accommodate all nutrition needs, but surpass them in anticipation of future development and exploration.



Dennis Space: Lunar Transport

Artist Rendition

Astronauts, engineers and space tourists alike will appreciate an off-planet food supply chain that offers personalized solutions, premium products, and fresh ingredients.



THE GATEWAY

A vital component of NASA's Artemis program, will serve as a multi-purpose outpost orbiting the Moon that provides essential support for long-term human return to the lunar surface and serves as a staging points for deep space exploration. NASA is working with commercial and international partners to establish the gateway.



Extra-planetary Transport

Considerations: Packaging, Weight, Sterilization, Climate Control, Etc.